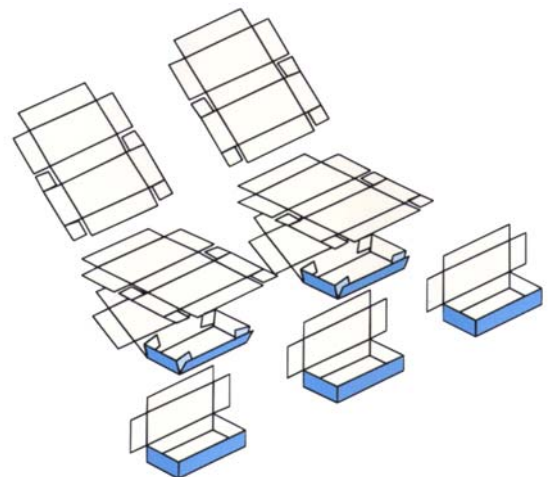


F60-2

New generation compact mechanical forming machine for carton/thin corrugated board



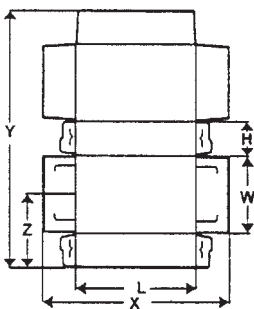
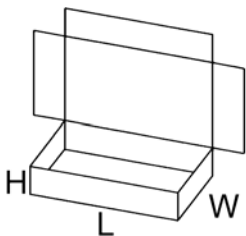
- ◆ Stainless steel
- ◆ Fixed & adjustable tools
- ◆ Easy tool change
- ◆ Easy to place
- ◆ Mechanically operated
- ◆ For all types of forming tools single or double

The Sprinter F60-2 is a compact and mechanically driven carton former that addresses those who want an affordable, modern and reliable machine with an operating speed of 20 - 70 strokes per minute.

Carton size (mm)

With standard tool. Size depending on single or double tooling. Other sizes on request.

	L	W	H
Max	480	210	90
Min	90	65	20
Blank width X	150-520		
Blank length Y	130-700		
Centre Z	max. 185		



Models:

F 60-2 for mechanically locked carton style 301, 303, etc.

F 60-2-G for glue sealed carton style. Hot-melt glue jet application.

F 60-2-H for hot air sealed carton style. Hot-air application by electric heat generators.

F60-2

SPRINTER F60-2 is a mechanically operated carton former, designed to form packages from carton blanks with a capacity up to 70 strokes per minute.

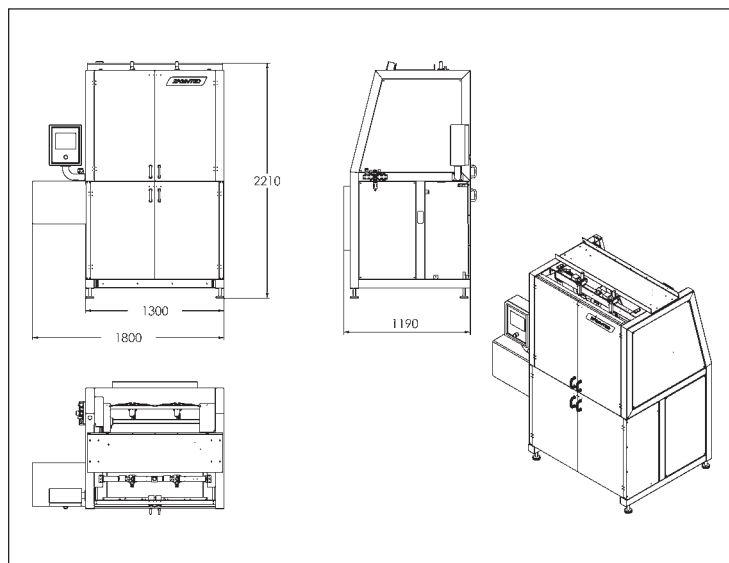
The F60-2 former is built for 24-hours operation. Care has been taken regarding reliability, easy access for operators, maintenance and service. The F60-2 comes as a free-standing model. It is easy to adapt the machine to different conveyors and applications. The machine is made in stainless steel and meets the high demands in the food industry.

FEATURES

- Compact carton forming machine.
- Wide range of sizes and carton styles.
- Electric cabinet integrated in the machine.
- Easy access for maintenance.
- Stainless steel outer frame.
- Quiet and smooth operation.



Easy access for maintenance and service.



Operating speed

Variable speed from 20 to 70 strokes/min.

Supply voltage

400V, 3-phase + neutral, 50 Hz (other supply standards available on request)

Control voltage

24V DC

Power demand

2,5 kW

7 kW hot melt

20,2 kW hot-air single head

35,2 hot-air double head

Compressed air

6 bar

Electrical standard

EN 60204-1 (other standards on request).

General standards

EN 292-1, EN 292-2, EN 294

Cooling water

Only with hot-air tools

Cooling flow

Minimum 5 l/min.

Cooling temp.

10-15°C at inlet

Weight

800 kg

Optional equipment

Carton flow control (formed cartons)

Low level magazine indicator.

Control of blank feed.

(Other options available on request).

Carton styles

All types of standard and special tools can be run in the F60-2 former.